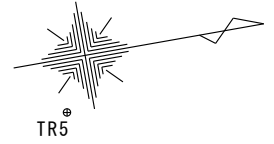


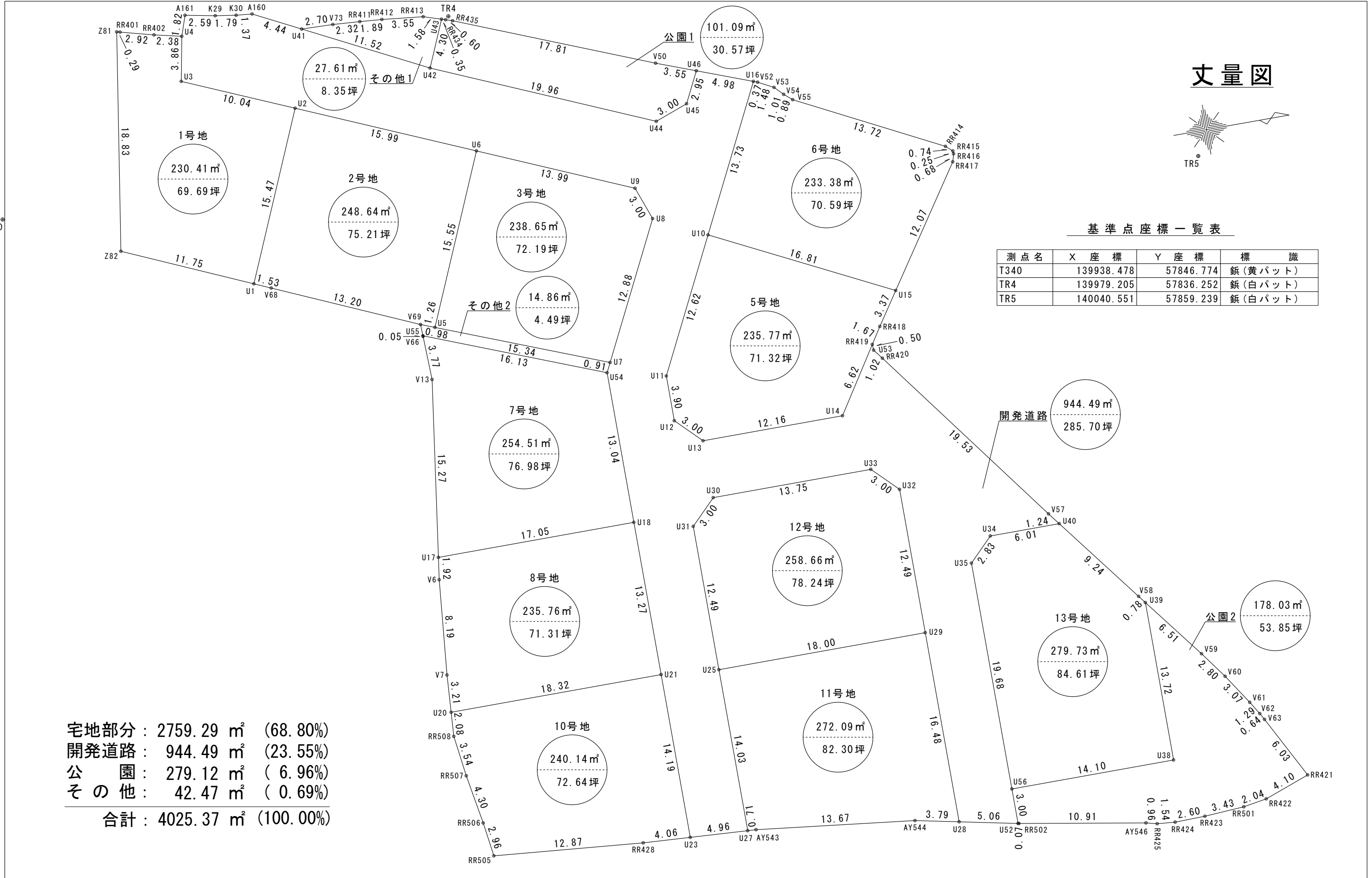
# 丈量図



基準点座標一覧表

測点名	X 座標	Y 座標	標識
T340	139938.478	57846.774	鈔(黄バット)
TR4	139979.205	57836.252	鈔(白バット)
TR5	140040.551	57859.239	鈔(白バット)

宅地部分 : 2759.29 m<sup>2</sup> (68.80%)  
 開発道路 : 944.49 m<sup>2</sup> (23.55%)  
 公園 : 279.12 m<sup>2</sup> (6.96%)  
 その他 : 42.47 m<sup>2</sup> (0.69%)  
 合計 : 4025.37 m<sup>2</sup> (100.00%)



土地の所在	木田郡三木町大字氷上字南福万	縮尺	1 / 300	測量年月日	令和 年 月 日	特記事項		作製者	石井登記測量事務所
土地の地番	1369、1378、1379、1380、1381 及び地先農道・水路	図面番号		作製年月日	令和 年 月 日				土地家屋調査士 石井敦雄 高松市春日町 1643-9 電話 843-3131

座 標 求 積 表

Table with 5 columns: 地番, 測点, 1号地, Xn, Yn, (Xn+1 - Xn-1)Yn. Rows include Z81, Z82, U1, U2, U3, U4, RR402, RR401.

Table with 5 columns: 地番, 測点, 2号地, Xn, Yn, (Xn+1 - Xn-1)Yn. Rows include U2, U1, V68, V69, U5, U6.

Table with 5 columns: 地番, 測点, 3号地, Xn, Yn, (Xn+1 - Xn-1)Yn. Rows include U6, U5, U7, U8, U9.

Table with 5 columns: 地番, 測点, 5号地, Xn, Yn, (Xn+1 - Xn-1)Yn. Rows include U10, U11, U12, U13, U14, RR419, RR418, U15.

Table with 5 columns: 地番, 測点, 6号地, Xn, Yn, (Xn+1 - Xn-1)Yn. Rows include U16, U10, U15, RR417, RR416, RR415, RR414, V55, V54, V53, V52.

Table with 5 columns: 地番, 測点, 7号地, Xn, Yn, (Xn+1 - Xn-1)Yn. Rows include U55, V66, V13, U17, U18, U54.

Table with 5 columns: 地番, 測点, 8号地, Xn, Yn, (Xn+1 - Xn-1)Yn. Rows include U17, V6, V7, U20, U21, U18.

Table with 5 columns: 地番, 測点, 10号地, Xn, Yn, (Xn+1 - Xn-1)Yn. Rows include U20, RR508, RR507, RR506, RR505, RR428, U23, U21.

Table with 5 columns: 地番, 測点, 11号地, Xn, Yn, (Xn+1 - Xn-1)Yn. Rows include U25, U27, AY543, AY544, U28, U29.

Table with 5 columns: 地番, 測点, 12号地, Xn, Yn, (Xn+1 - Xn-1)Yn. Rows include U30, U31, U25, U29, U32, U33.

Table with 5 columns: 地番, 測点, 13号地, Xn, Yn, (Xn+1 - Xn-1)Yn. Rows include U34, U35, U56, U38, U39, V58, U40.

Table with 5 columns: 地番, 測点, その他1, Xn, Yn, (Xn+1 - Xn-1)Yn. Rows include U41, U42, U43, RR413, RR412, RR411, V73.

Table with 5 columns: 地番, 測点, その他2, Xn, Yn, (Xn+1 - Xn-1)Yn. Rows include V69, U55, U54, U7, U5.

Table with 5 columns: 地番, 測点, 開発道路, Xn, Yn, (Xn+1 - Xn-1)Yn. Rows include A161, U4, U3, U2, U6, U9, U8, U7, U54, U18, U21, U23, U27, U25, U31, U30, U33, U32, U29, U28, U52, U56, U35, U34, U40, U40, V57, RR420, U53, RR419, U14, U13, U12, U11, U10, U16, U46, U45, U44, U42, U41, A160, K30, K29.

Table with 5 columns: 地番, 測点, 公園1, Xn, Yn, (Xn+1 - Xn-1)Yn. Rows include U43, U42, U44, U45, U46, V50, RR435, RR434.

Table with 5 columns: 地番, 測点, 公園2, Xn, Yn, (Xn+1 - Xn-1)Yn. Rows include U56, U52, RR502, AY546, RR425, RR424, RR423, RR501, RR422, RR421, V63, V62, V61, V60, V59, U39, U38.

Form containing land location (木田郡三木町大字氷上字南福万), scale (縮尺 1/300), measurement date (令和 年 月 日), and creator information (石井登記測量事務所).